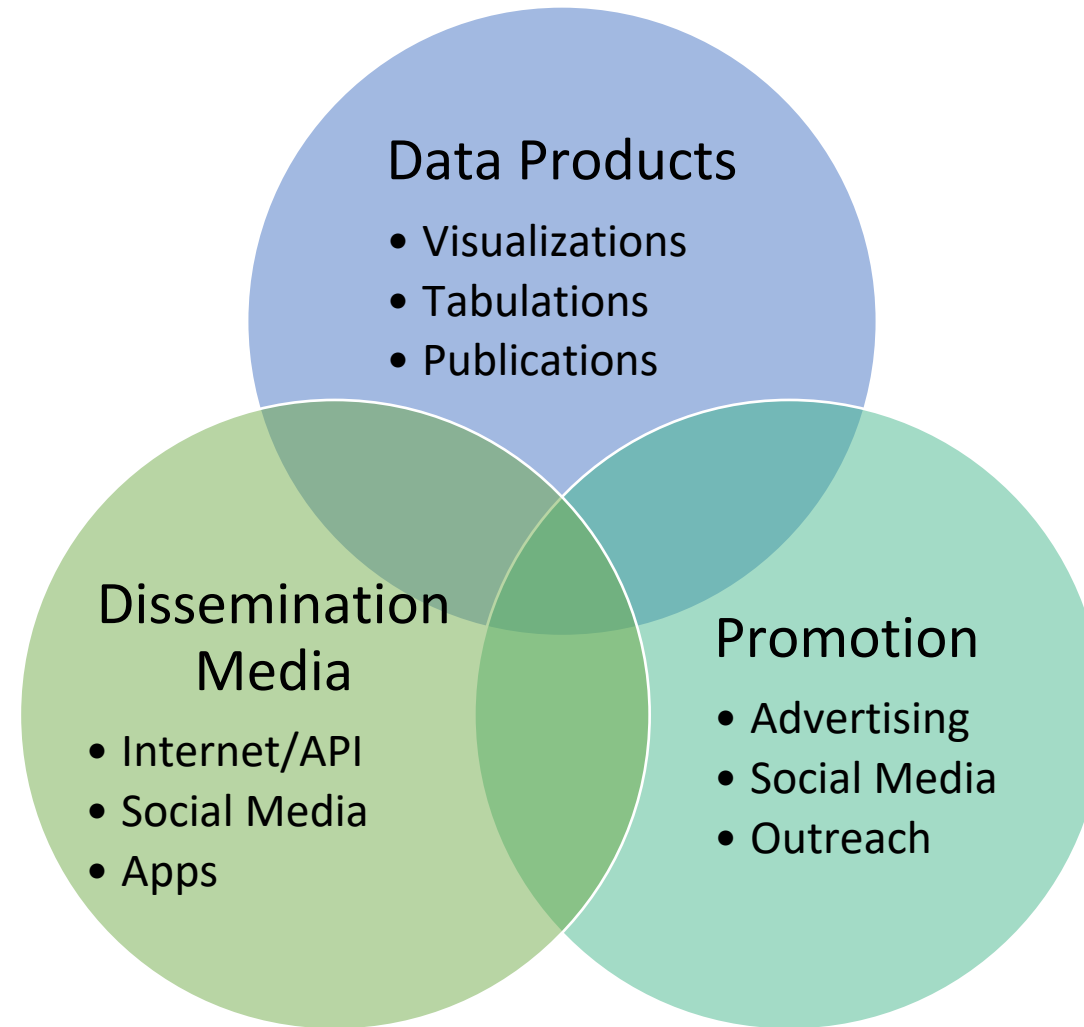


Elements of Dissemination



Types of Data Products

Tabulations/ Databases

- Printed tables
- Tabular data files
- Databases
- Microdata
- Restricted use files
- Geographic data
- Georeferenced data

Publications

- Reports
- Briefs
- Visualizations
- Atlases
- General interest and special audience products
- Methodological documentation
- Administrative Reports

Metadata

- Reference
- Structural

Tabulations

UN Principles and Recommendations for Population and Housing Censuses

Population - 20 essential tabulations and 33 recommended tabulations

Housing - 7 essential tabulations and 19 recommended tabulations

Additional tabulations to meet user needs

Provisional and results

Printed Tables

State County Place and [in Selected States] County Subdivision	Family households				Nonfamily households				Persons per...		Persons in group quarters		
	Persons in household	All persons	Total	Average household size	Total	Total	45 years and over		Household	Family	Total	Institutions and nursing homes	Other persons in group quarters
							Total	Female					
CONNECTICUT	10 583 644	4 087 544	3 895 233	3 394 111	478 078	193 223	836 458	414 382	399 348		341 451	153 331	109 128
Albany County	24 978	10 192	7 036	3 740	1 028	1 071	1 071	1 071	1 071	1 071	1 071	1 071	1 071
...
NEW YORK	19 545 024	7 545 177	7 143 411	3 571 717	1 211 811	1 211 811	1 211 811	1 211 811	1 211 811	1 211 811	1 211 811	1 211 811	1 211 811
...

Table 1.
Median Household Income and Gini Index in the Past 12 Months by State and Puerto Rico:
2019 and 2021

(In 2021 inflation-adjusted dollars. Data are limited to the household population and exclude the population living in institutions, college dormitories, and other group quarters. Information on confidentiality protection, sampling error, nonsampling error, and definitions is available at <www.census.gov/acs>.)

State	2019 ACS median household income (dollars)		2021 ACS median household income (dollars)		Change in median income (percent)		2019 ACS Gini Index		2021 ACS Gini Index		Change in Gini Index (percent)	
	Estimate	Margin of error (±)	Estimate	Margin of error (±)	Estimate	Margin of error (±)	Estimate	Margin of error (±)	Estimate	Margin of error (±)	Estimate	Margin of error (±)
United States	69,639	125	69,717	134	0.1	0.3	0.481	0.001	0.485	0.001	*0.8	0.2
Alabama	54,826	635	53,913	781	-1.7	1.8	0.474	0.005	0.482	0.005	*1.7	1.5
Alaska	79,973	2,855	77,845	2,148	-2.7	4.4	0.438	0.012	0.439	0.011	0.4	3.8
Arizona	65,764	472	69,056	686	*5.0	1.3	0.459	0.004	0.463	0.004	0.8	1.3
Arkansas	51,878	915	52,528	1,002	1.3	2.6	0.475	0.006	0.475	0.006	Z	1.9
California	85,248	332	84,907	542	-0.4	0.7	0.487	0.002	0.492	0.002	*1.2	0.5
Colorado	81,737	839	82,254	791	0.6	1.4	0.455	0.005	0.460	0.005	1.2	1.5
Connecticut	83,545	1,439	83,771	1,112	0.3	2.2	0.502	0.005	0.499	0.005	-0.8	1.4
Delaware	74,370	1,720	71,091	1,795	*-4.4	3.3	0.451	0.013	0.455	0.015	0.8	4.4
District of Columbia ..	97,781	2,647	90,088	3,477	*-7.9	4.3	0.512	0.010	0.531	0.013	*3.7	3.2
Florida	62,767	469	63,062	425	0.5	1.0	0.481	0.003	0.487	0.003	*1.3	0.8
Georgia	65,684	463	66,559	712	*1.3	1.3	0.480	0.004	0.479	0.005	-0.2	1.4
Hawaii	88,069	2,266	84,857	2,106	*-3.6	3.4	0.440	0.008	0.455	0.010	*3.5	2.9
Idaho	64,645	1,134	66,474	1,752	2.8	3.3	0.434	0.010	0.458	0.012	*5.5	3.7
Illinois	73,322	620	72,205	574	*-1.5	1.1	0.480	0.003	0.482	0.004	0.5	1.0
Indiana	61,046	721	62,743	716	*2.8	1.7	0.458	0.005	0.448	0.005	*-2.3	1.5
Iowa	65,378	795	65,600	777	0.3	1.7	0.442	0.006	0.449	0.007	1.5	2.0
Kansas	65,798	733	64,124	951	*-2.5	1.8	0.450	0.006	0.460	0.007	*2.2	2.0
Kentucky	55,421	662	55,573	701	0.3	1.7	0.476	0.005	0.476	0.005	-0.1	1.6
Louisiana	54,126	621	52,087	750	*-3.8	1.8	0.498	0.005	0.499	0.006	0.2	1.5
Maine	62,446	1,863	64,767	1,258	*3.7	3.7	0.449	0.008	0.466	0.011	*3.9	3.1
Maryland	91,922	990	90,203	1,065	*-1.9	1.6	0.456	0.004	0.463	0.005	*1.6	1.3
Massachusetts	90,974	1,050	89,645	1,287	-1.5	1.8	0.480	0.004	0.489	0.004	*1.9	1.1
Michigan	63,145	606	63,498	526	0.6	1.3	0.463	0.003	0.466	0.003	0.5	1.0
Minnesota	79,051	875	77,720	915	*-1.7	1.6	0.443	0.004	0.449	0.004	*1.3	1.3
Mississippi	48,529	1,255	48,716	1,242	0.4	3.6	0.490	0.009	0.481	0.007	-1.8	2.2
Missouri	60,840	681	61,847	669	*1.7	1.6	0.463	0.004	0.471	0.005	*1.6	1.3
Montana	60,569	1,277	63,249	1,423	*4.4	3.2	0.460	0.010	0.469	0.013	2.1	3.6
Nebraska	67,008	992	66,817	1,060	-0.3	2.2	0.440	0.006	0.456	0.006	*3.6	2.0
Nevada	67,058	1,082	66,274	1,011	-1.2	2.2	0.471	0.007	0.473	0.007	0.3	2.1
New Hampshire	82 591	2 113	88 465	2 144	*7.1	3.8	0.441	0.009	0.435	0.009	-1.3	2.8

Tabular Data Files

Education Table 1. Childcare Arrangements in the Last 7 Days, by Select Characteristics: United States

Source: U.S. Census Bureau Household Pulse Survey, Week 49.

Note: These data are experimental. Users should take caution using estimates based on subpopulations of the data – sample sizes may be small and the standard errors may be large.**

Total Population 18 Years and Older in Households with Children

Select characteristics	Total	Individuals or arrangements to look after the children in the household in the past 7 days*						
		Family day care provider caring for 2 or more children outside of your home	Child care or day care center	Nursery or preschool	Before care, aftercare, or summer camp	Federally supported Head Start program	Non-relative such as a friend, neighbor, sitter, nanny, or au pair	Relative other than parent, such as sibling or grandparent
Total	95,817,510	2,309,367	6,969,630	4,496,122	4,678,597	955,735	5,006,953	19,137
Age								
18 - 24	7,017,437	36,394	108,288	51,972	67,783	25,183	151,879	1,696
25 - 39	34,819,215	1,017,191	4,341,214	2,689,327	2,008,293	353,065	2,597,472	9,531
40 - 54	36,091,506	739,135	2,003,706	1,298,151	2,236,950	429,729	1,781,727	5,553
55 - 64	9,201,878	190,511	230,657	209,009	170,596	27,036	241,468	1,397
65 and above	8,687,473	326,136	285,765	247,664	194,976	120,723	234,406	958
Sex at birth								
Male	44,253,447	1,298,769	3,147,485	2,260,669	2,108,022	575,989	2,207,444	8,424
Female	51,564,064	1,010,597	3,822,145	2,235,453	2,570,575	379,746	2,799,509	10,713
Gender								
Cisgender male	42,616,443	1,148,253	2,975,152	2,086,927	1,974,220	442,106	1,922,486	8,112
Cisgender female	50,187,071	988,363	3,747,213	2,233,002	2,517,022	370,078	2,751,267	10,446
Transgender	834,997	57,568	92,949	34,746	40,264	34,674	118,089	117
None of these	1,272,621	115,183	140,799	119,568	140,400	108,877	183,310	387
Did not report	906,378	-	13,516	21,879	6,691	-	31,800	74
Sexual orientation								
Gay or lesbian	1,465,051	13,634	102,881	10,260	65,539	9,967	144,434	193
Straight	84,295,949	1,826,448	6,109,283	4,048,884	4,193,995	758,919	4,199,530	16,655
Bisexual	5,156,796	206,449	376,468	132,068	210,785	51,001	355,367	1,235

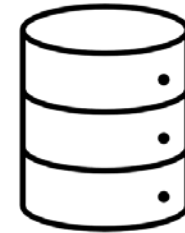


Databases

Databases are a useful complement to standard tabulations.

Database considerations

1. Include microdata, aggregated data, both?
2. Existing database (with prior census data) or new database?
 - a. If new, will the form of the new database be the same as the old or will it incorporate additional information?
3. Which software or database format? How will queries be handled?
4. What type of hardware will be used? Will the hardware handle anticipated growth?
5. Any considerations arising from user consultations?



Databases can be time-consuming to create. So, they should fit within your organization's statistical framework and be seen as an ongoing process that complements dissemination and strengthens your statistical capacity.



Microdata

Individual respondent level data
Sample only
IPUMS

Key consideration: **Protect Confidentiality**

Four Principles of microdata confidentiality:

1. Appropriate use of microdata.
2. Microdata is only for statistical purposes.
3. Consistency with legal and other necessary arrangements ensuring confidentiality.
4. Procedures for access are transparent and publicly available.

[UN Principles and Recommendations for Population and Housing Censuses](#)

[Homepage | IPUMS](#)



[Home \(worldbank.org\)](#)



[IHSN | International Household Survey Network](#)



Microdata and Confidentiality

Public Use	Remote Data Access	Licensed/Research	Data Enclaves
<ul style="list-style-type: none">• Conditionally available to anyone• Anonymized• Minimal risk of disclosure	<ul style="list-style-type: none">• Provide users access to web-based data tabulation and analysis software• No possibility of users to download datasets• Protects confidentiality	<ul style="list-style-type: none">• Restricted access• Anonymized, but may contain identifiable data if linked to other data files• Signed agreement governing the access and use of microdata file	<ul style="list-style-type: none">• A special restricted access facility• Contain data with sensitive data or with potential identification of respondents

[Federal Statistical Research Data Centers \(FSRDCs\) - YouTube](#)

Geographic data

Geodatabases, shapefiles, lines, and points to be used to create maps, including:

- Statistical boundaries (e.g., enumeration areas)
- Political and administrative boundaries (e.g., provinces, election areas, etc.)
- Special regions (e.g., national parks, tribal areas, military bases, etc.)
- Environmental features (e.g., rivers, lakes, etc.)
- Transportation features (e.g., roads, railroads, airports, etc.)
- Cities, towns, and other landmarks

Geography

Main About Maps & Data Reference Partnerships Education Research GSS-I Contact Us

Maps & Data

- [Maps & Data Main Page](#)

Maps

- [Census Data Mapper](#)
- [Reference](#)
- [Thematic](#)
- [Maps Available for Purchase](#)

Data

- [TIGER Products](#)
- [Census Geocoder](#)
- [Partnership Shapefiles](#)
- [Relationship Files](#)
- [Gazetteer Files](#)
- [Block Assignment Files](#)
- [Name Lookup Tables](#)
- [Tallies](#)
- [LandView](#)

TIGER Products

TIGER = Topologically Integrated Geographic Encoding and Referencing

TIGER products are spatial extracts from the Census Bureau's MAF/TIGER database, containing features such as roads, railroads, rivers, as well as legal and statistical geographic areas. The Census Bureau offers several file types and an online mapping application. Our products are:

- [TIGER/Line Shapefiles - New 2015 Shapefiles](#)
- [TIGER/Line Geodatabases](#)
- [TIGER/Line with Selected Demographic and Economic Data](#)
- [Cartographic Boundary Shapefiles](#)
- [KML - Cartographic Boundary Files](#)
- [TIGERweb](#)

25 Years and Counting

- [TIGER Story Map \(Part 1\)](#)
- [Happy 25th Anniversary, TIGER](#)

[TIGER Data and Product FAQs](#)

Which product should I use?

Product	Best For...	File Format	Type of Data	Level of Detail	Descriptive Attributes	Vintages Available
TIGER/Line Shapefiles	Most mapping projects—this is our <i>most comprehensive dataset</i> . Designed for use with GIS (geographic information systems).	Shapefiles (.shp) and database files (.dbf)	Boundaries, roads, address information, water features, and more	Full detail (not generalized)	Extensive	2006 - 2015, CD 113
TIGER Geodatabases	Useful for users needing national datasets or all major boundaries for by state. Designed for use in ArcGIS. Files are extremely large.	Geodatabase (.gdb)	Boundaries, roads, address information, water features, and more	Full detail (not generalized)	Limited	2013-2014
TIGER/Line with Selected Demographic and Economic Data	Data from selected attributes from the 2010 Census, 2006-2010 ACS 5-year estimates, 2007-2011 ACS 5-year estimates, 2008-2012 ACS 5-year estimates and County Business Patterns (CBP) for selected geographies. Designed for use with GIS.	Shapefiles (.shp) and Geodatabases	Boundaries, Population Counts, Housing Unit Counts, 2010 Census Demographic Profile 1 attributes, 2006-2010 ACS 5-year estimates data profiles, 2007-2011 ACS 5-year estimates data profiles, CBP data.	Full detail (not generalized)	Limited	2012 CBP, 2010, 2005-2011 ACS, 2007-2011 ACS, 2008-2012 ACS
Cartographic Boundary Shapefiles	Small scale (limited detail) mapping projects clipped to shoreline. Designed for thematic mapping using GIS.	Shapefiles (.shp)	Selected boundaries	Less detail (generalized)	Limited	2014, 2013, 2010, 2000, 1990
KML - Cartographic Boundary Files	Viewing data or creating maps using Google Earth, Google Maps, or other platforms that use KML.	KML (.kml)	Selected boundaries	Less detail (generalized)	Limited	2014, 2013
TIGERweb	Viewing spatial data online or streaming to your mapping application.	Interactive viewer, HTML data files, plus REST and WMS map services	Boundaries, roads, address information, water features, and more	Detailed	Extensive	2012, 2010, 2012 ACS and 2011 ACS

[Census Mapping Files](#)

Georeferenced Data

Increasing demand for georeferenced data that links population and socioeconomic data collected in censuses to geospatial data.

Useful when:

- Geographic boundaries have changed over time
- Emergency management plans for small geographic areas
- Geographic areas of interest are different from census-published admin levels
- Analysis of access to public and other services
- Interested in spatial analysis, geographical patterns associated with demographic and socioeconomic indicators

But, need to **protect confidentiality**

Types of Data Products

Tabulations/ Databases

- Printed tables
- Tabular data files
- Databases
- Microdata
- Restricted use files
- Geographic data
- Georeferenced data

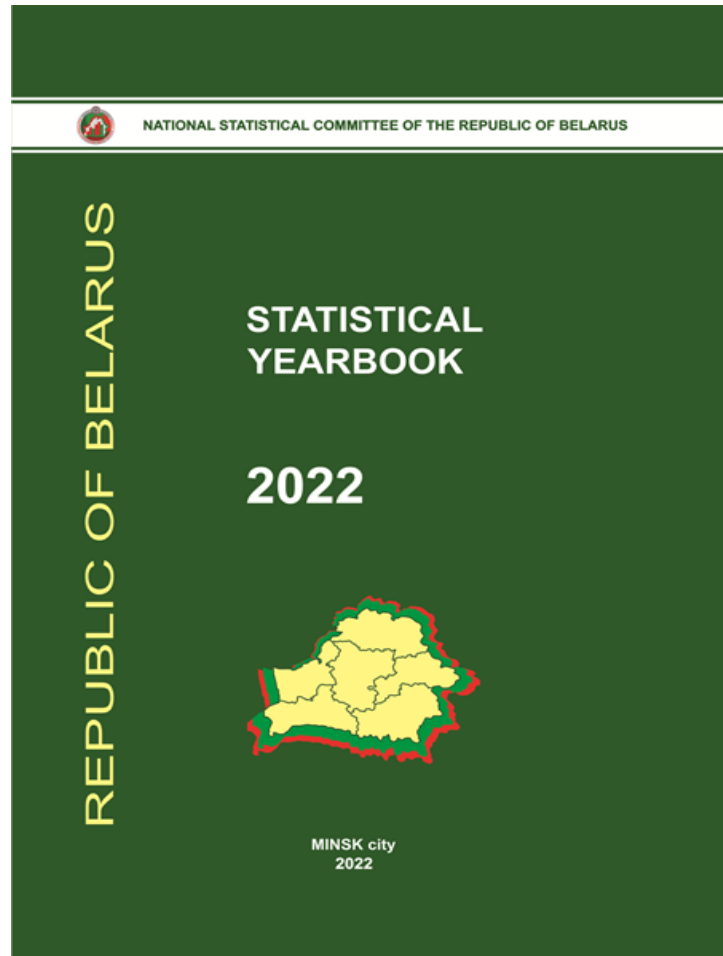
Publications

- Reports
- Briefs
- Visualizations
- Atlases
- General interest and special audience products
- Methodological documentation
- Administrative Reports

Metadata

- Reference
- Structural

Reports





Briefs

America Counts: Stories Behind the Numbers



Population

Detailed Characteristics of Hundreds of Race/Ethnic and Tribal Groups

Detailed social, economic, housing and demographic characteristics on race, Hispanic origin, ancestry and tribal groups now available for numerous geographies.



Families and Living Arrangements

U.S. Adults Provided \$17.5 Billion in Support to Parents in 2020

Almost as many U.S. adults voluntarily provided financial support to parents as those who paid mandatory child support.



Families and Living Arrangements

Several Generations Under One Roof

Multigenerational households and those with children living with grandparents increased from 2010 to 2020.



Population

Going With the Flow: State-to-State Migration

Recently released estimates show more people moved between states in 2021 than in 2019, many to and from highly populated and neighboring states.



Families and Living Arrangements

Home Alone: More Than A Quarter of All Households Have One Person

In 2020, 27.6% of occupied U.S. households had one person living



Population

How Socially Vulnerable Is Puerto Rico to Disasters?

All municipios and 87% of census tracts in Puerto Rico showed higher social vulnerability than the United



Population

¿Cuánta vulnerabilidad social ante desastres tiene Puerto Rico?

Todos los municipios y el 87 % de los sectores censales en Puerto Rico



Population

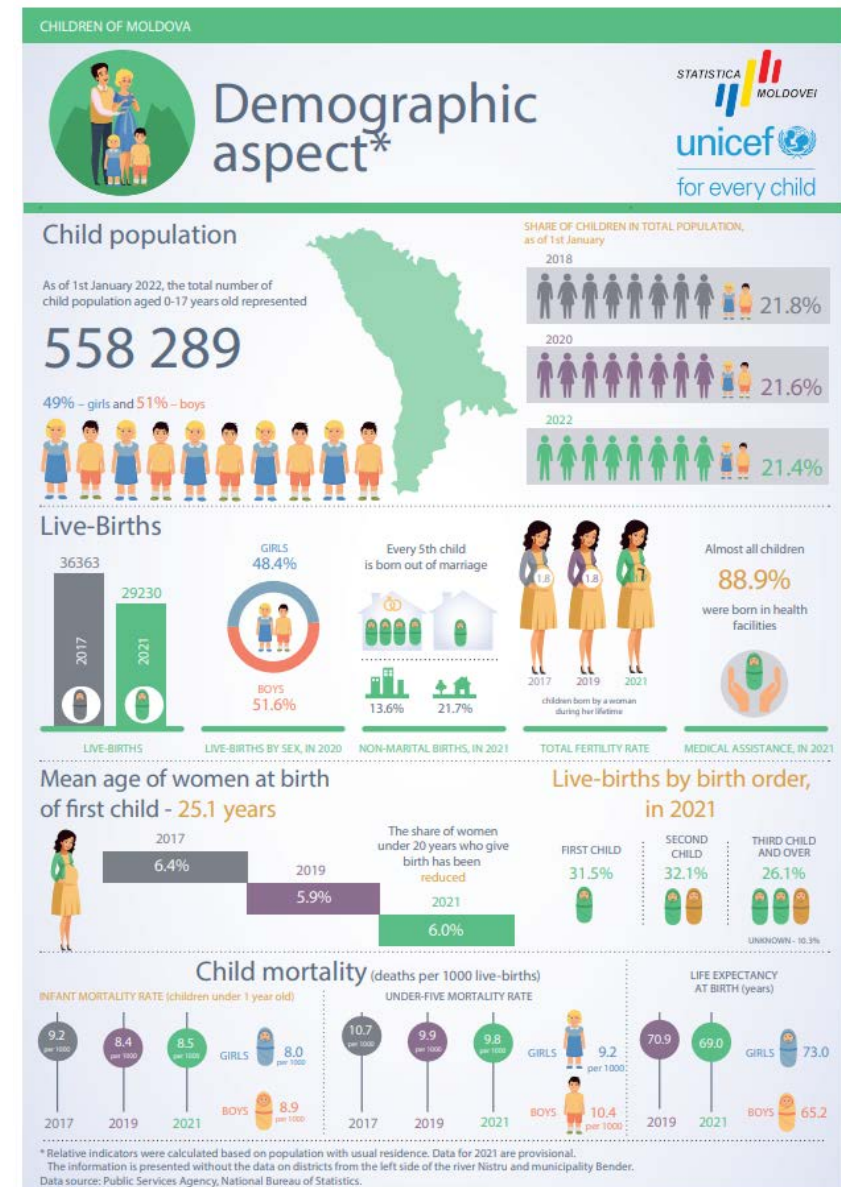
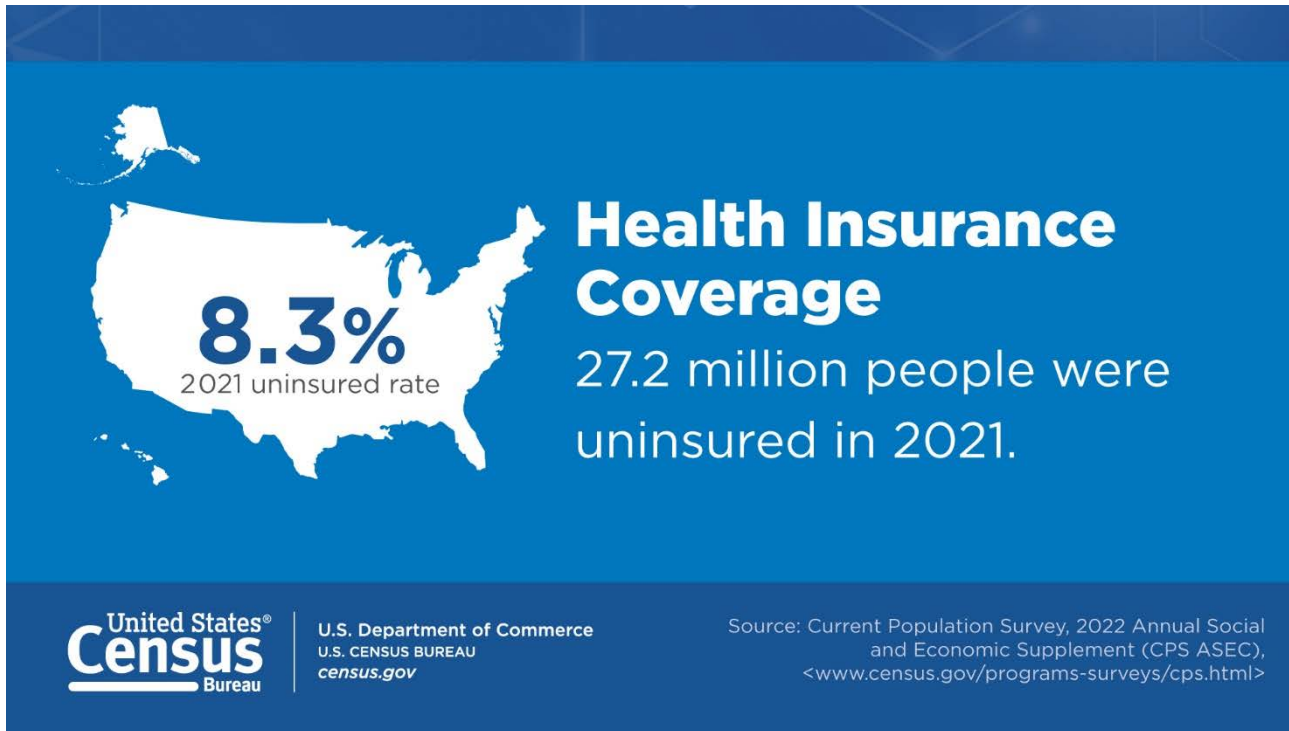
Nearly a Third Reporting Two or More Races Were Under 18 in 2020

The 2020 Census shows the Multiracial population increased in all



[America Counts: Stories Behind the Numbers \(census.gov\)](https://www.census.gov)

Visualizations/Infographics



Special Audience Products



[Statistics in Schools \(census.gov\)](https://www.census.gov/statistics-in-schools)



DATA GEM: Are We Growing or Slowing? How to Access Population Estimates for Cities and Towns

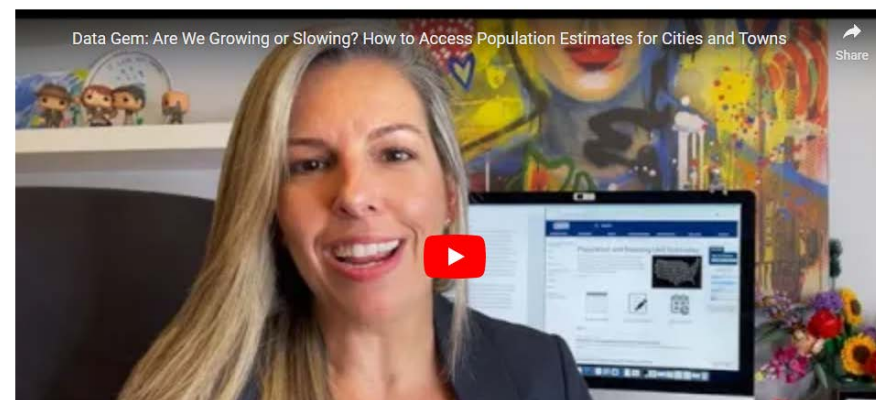
May 26, 2022

Share [f](#) [t](#) [in](#)
Facebook Twitter LinkedIn

Description

Whether you are interested in calculating the population trends and changes in your town, or researching an area to relocate to, this Data Gem shows you how to find data from the Census Bureau's [Population Estimates Program](#) for cities and towns.

As a bonus, we show you how to use Excel to download population tables and calculate the population percentage change between years.



[Census Academy: Data Gems - YouTube](#)

World Cup 2022: Let's Play!

[2022 World Cup Population Game \(census.gov\)](https://www.census.gov)

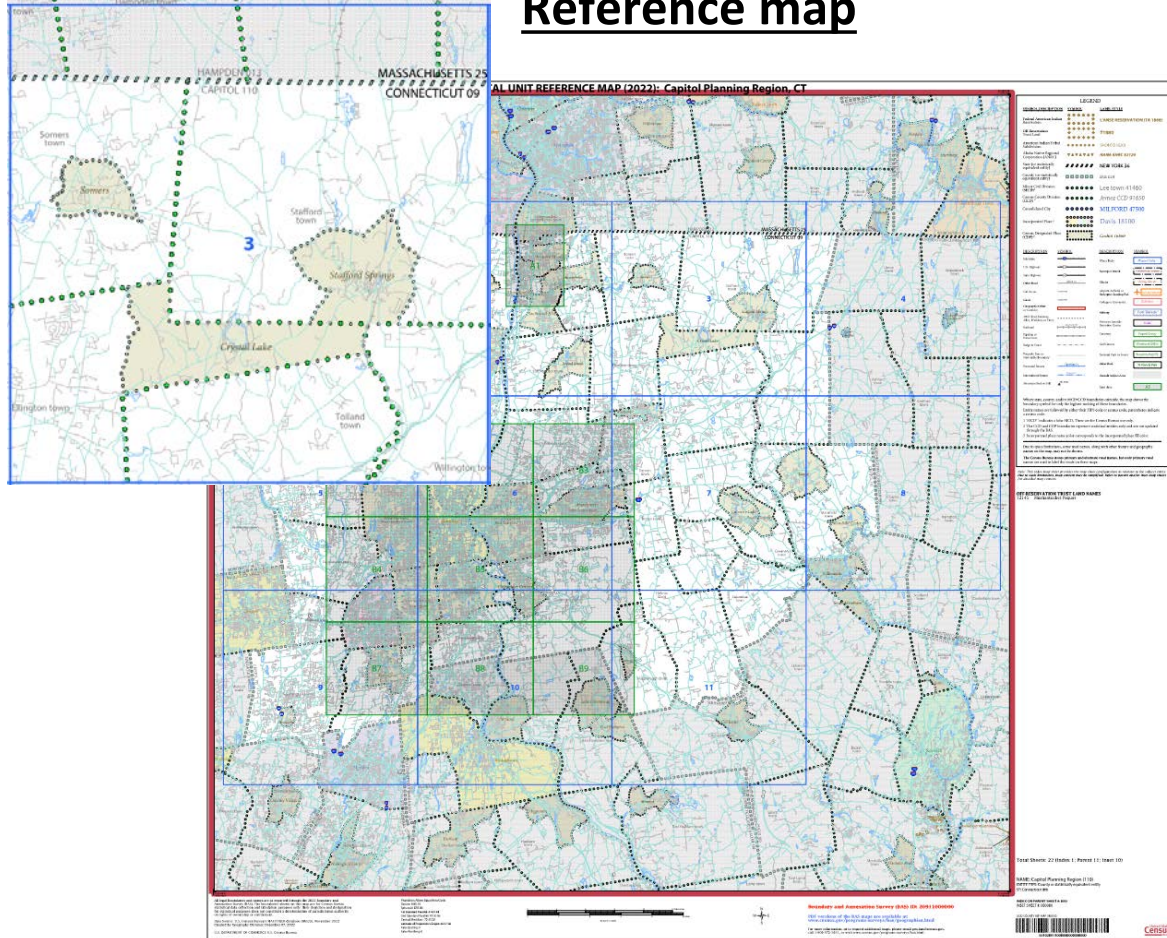


U.S. Department of Commerce
Economics and Statistics Administration
U.S. CENSUS BUREAU
[census.gov](https://www.census.gov)

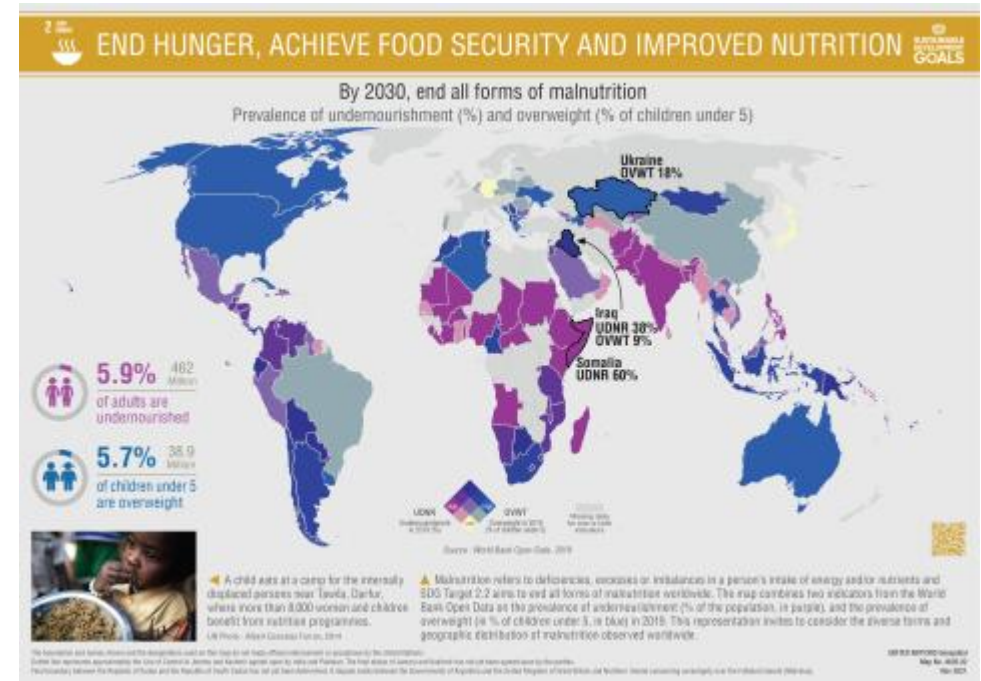
Source: U.S. Census Bureau International Data Base and United Kingdom Office for National Statistics

Maps and Atlases

Reference map



Thematic map






Methodological Documentation

// Census.gov / Our Surveys & Programs / American Community Survey (ACS) / Methodology / Design and Methodology Report

Within Methodology
Content Test
Design and Methodology Report
Mandatory vs. Voluntary Methods
Questionnaire Archive
Sample Size and Data Quality

Design and Methodology Report

Share   


The 2014 Design and Methodology Report contains descriptions of the basic design of the American Community Survey and details of the full set of methods and procedures. We have archived the [previous version](#) of the report.

Related Information

[Share Your ACS Data Story](#)
[Contact Us](#)

Introduction


The American Community Survey (ACS) is a relatively new survey conducted by the U.S. Census Bureau. It uses a series of monthly samples to produce annually updated estimates for the same small areas (census tracts and block groups) formerly surveyed via the decennial census long-form sample. Initially, five years of samples were required to produce these small-area data. Once the Census Bureau, released its first 5-year estimates in December 2010; new small-area statistics now are produced annually. The Census Bureau also will produce 3-year and 1-year data products for larger geographic areas. The ACS includes people living in both housing units (HUs) and group quarters (GQs). The ACS is conducted throughout the United States and in Puerto Rico, where it is called the Puerto Rico Community Survey (PRCS). For ease of discussion, the term ACS is used here to represent both surveys.



[Download Full Report \[PDF - 2.7 MB\]](#)

This document describes the basic ACS design and methodology as of the 2013 data collection year. The purpose of this document is to provide data users and other interested individuals with documentation of the methods used in the ACS. Future updates of this report are planned to reflect additional design and methodology changes. This document is organized into 16 chapters. Each chapter includes an overview, followed by detailed documentation, and a list of references.




Download by chapter



// Census.gov / Our Surveys & Programs / Decennial Census of Population and Housing / Technical Documentation / Decennial Census Technical Documentation

Within Technical Documentation
Decennial Census Technical Documentation
Island Areas Censuses Technical Documentation
Questionnaires & Instructions
Subject Definitions

Decennial Census of Population and Housing Technical Documentation

Share   

[GO TO ISLAND AREAS CENSUSES DOCUMENTATION](#)

These documents refer to the decennial census conducted in the 50 U.S. states, Washington D.C., and Puerto Rico.

Technical documents are designed to help people use published statistics. The resources available for download may vary by census year and can include the following.

Codebooks - Information about the files, including descriptive information on all of the variables.

Data Dictionary - A repository of information describing database attributes including identification of record codes and area characteristics, endnotes, and table section.

Historical Changes - Information for the current census year and prior census years.

Methodology - The methods we use to collect census data and produce the census results, including sampling, questions, collection, review, quality, weighting, etc.

Questionnaires - Find the most recent questionnaire and whether an archive of past questionnaires is available online.

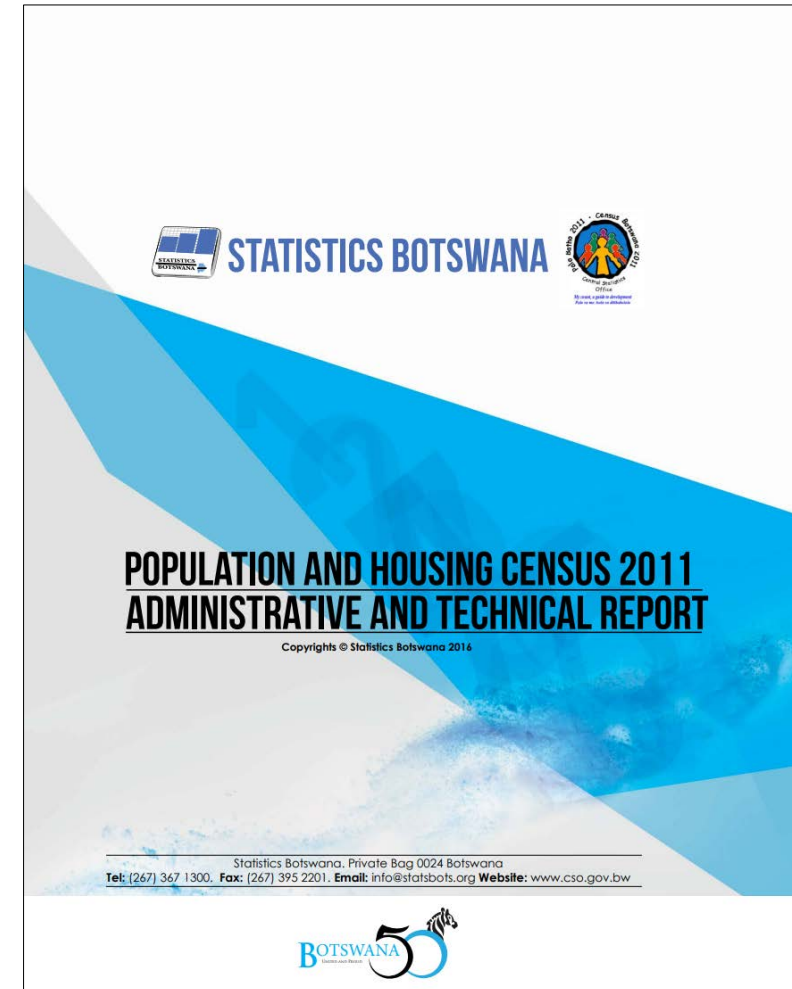
Subject Definitions - Definitions of population, housing and other variables to help you understand the results of a census.

User Notes - Issues affecting the census, including design, collection, processing, tabulation, and release, to be better informed when analyzing stats.

Administrative Reports

- Organizational structure
- Budget and funding
- Quality control procedures
- Census calendar
- Cartographic work
- Field organization
- Questionnaire design
- Data processing

Very useful for planning future censuses or surveys



Types of Data Products

Tabulations/ Databases

- Printed tables
- Tabular data files
- Databases
- Microdata
- Restricted use files
- Geographic data
- Georeferenced data

Publications

- Reports
- Briefs
- Visualizations
- Atlases
- General interest and special audience products
- Methodological documentation
- Administrative Reports

Metadata

- Reference
- Structural

Metadata

Two types

- Reference – concepts, definitions, methods, and quality
- Structural – identifiers and descriptors

Sites for Good Standards and Practices



[DCMI: Home \(dublincore.org\)](http://dublincore.org)



[Data Documentation Initiative \(ddialliance.org\)](http://ddialliance.org)



[ISO - ISO/IEC 11179-1:2015 - Metadata registries \(MDR\)](#)

Metadata to be included for tabulations

- Census questions and reasons why they are asked
- Conceptual definitions (census dictionary)
- Geographic hierarchies
- Changes since the previous census about content, operational methods or geographic boundaries
- Quality indicators such as coverage rates and item non-response